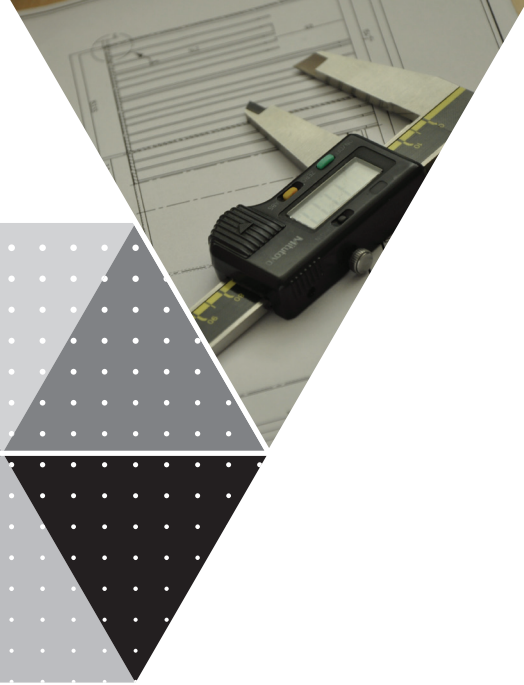




# PRODUCT CATALOGUE

[www.akumsan.com](http://www.akumsan.com)





## ABOUT US

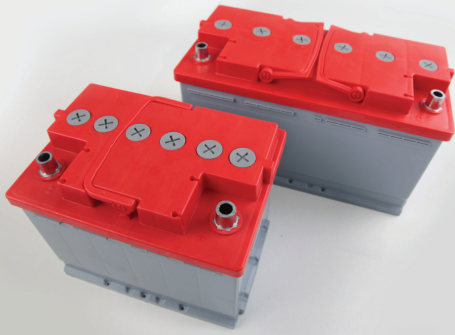
Akümsan was incorporated in Istanbul in 1979 in order to manufacture plastic boxes and lids for automotive and industrial battery manufacturers in Turkey and worldwide.

Akümsan is one of the key players serving with its high capacity and hundreds of product range in its main scope of activity and aiming to meet market requirements with more efficient and environment friendly products through its wide R&D team, enabling its customers to differentiate themselves with its special design products and having high brand recognition in its sector.



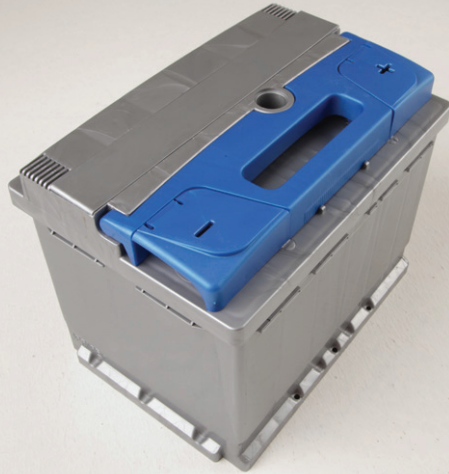
# L SERIES CONVENTIONAL LIDS

## Kamina & T7 Types



### Conventional Kamina Series

With / Without Filter Available  
L1,L2,L3,L5, Available as Non Kamina.



### T7 Kamina Series

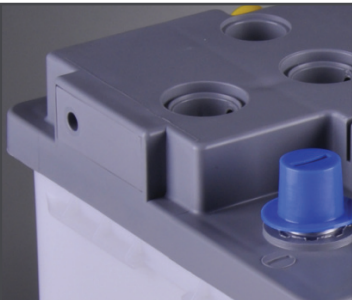
Strip on plugs - With / Without Locking  
Available L1,L2,L3,L5



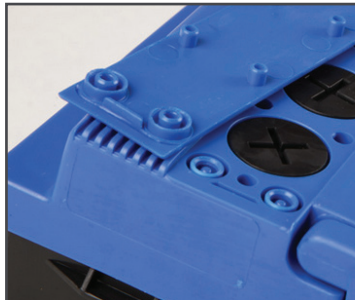
### T7 Prestige Kamina Series

Strip on plugs - With / Without Locking  
Available L1,L2,L3,L5

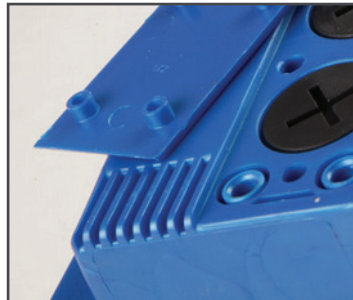
## DETAILS



With / Without  
Filter



Plug Strip - Locking



Plug Strip - WO  
Locking



Prestige Terminal  
Covers

# L SERIES CONVENTIONAL LIDS

## Kamina Type



T22 Kamina Series

Available L2, L3, L5



Front Handle Type



Secondary Lid To Cover On Plugs,  
With Filter System

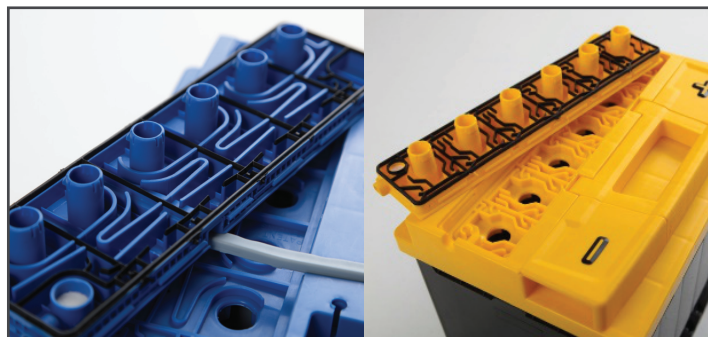
# L SERIES MF PUSHING TYPE LIDS - PREMIUM MF / T-AKUMSAN TYPES



## T-AKUMSAN MF Series

Pushing type double Lid with conventional appearance  
Available L1,L2,L3,L4,L5

## DETAILS



Pushing Type Secondary Lids  
Leakage Proof / 100% Sealed



## Special Design - T15

Front Handle  
Available L1,L2,L3,L4,L5



## Special Design - T16

Front Handle  
Available L1,L2,L3,L4,L5



## Special Design - T17

Front Handle  
Available L1,L2,L3,L4,L5



## Special Design - T18

Front Handle  
Available L1,L2,L3,L4,L5



## Special Design - T19

Front Handle  
Available L1,L2,L3,L4,L5



## Special Design - T20

Front Handle  
Coming Soon

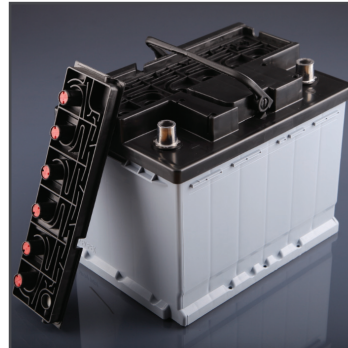
# L SERIES MF HEAT SEAL TYPE LIDS

## T12 Series & Hyundai Special



**T12 MF Series – Heat Seal Type**  
Double Lid with conventional appearance  
Available L1,L2,L3,L5

### DETAILS



Secondary Lid with  
condensation plugs (T12)



Secondary Lid with  
labyrinth structure (T12)



**Hyundai MF Cover – Heat Seal Type**  
Special Project for Hyundai Aftermarket  
Available only – L2

### DETAILS



Secondary Lid with acid-return structure

# L SERIES MF LIDS T22 / T23 Types



**T22 MF Series – Heat Seal Type**  
Double Lid with front handle  
Available L2,L3,L5

## DETAILS



Front handle type



Secondary Lid with labyrinth structure



**T23 MF Series – Heat Seal Type**  
Double Lid with conventional appearance  
Available L2,L3,L5

## DETAILS



Handle type conventional



Secondary Lid with labyrinth structure



# L SERIES MF LIDS T9 / T10 / T11 Types



## T9 MF Series

Double Lid with front handle and  
slide terminal covers  
Available L1,L2,L3,L5



## T10 MF Series

Double Lid with conventional  
appearance  
Available L1,L2,L3,L5



## T11 MF Series

Double Lid with front handle and  
fold terminal covers  
Available L1,L2,L3,L5

## DETAILS



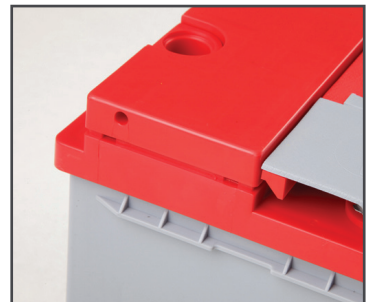
Sliding terminal covers  
(T9)



Inner Plugs with / without  
membrane (T9-T10-T11)



Folding terminal covers  
(T11)



Pushing type or Heat  
Seal Type Lids (T9-T10-T11)

# JIS SERIES

## Conventional and MF Types



**JIS – Conventional  
Flat Lids**

M16 & M18 Plug options  
Available Ns40, Ns60, D23,  
D26(N50), D31(N70)



**JIS – MF Heat Seal  
Type Lids**

Double lid with labyrinth structure  
Available Ns40, Ns60, D23,  
D26(N50), D31(N70)



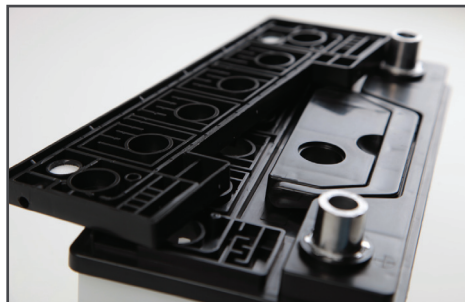
**JIS – MF Pushing  
Type / T-Akumsan Lids**

Pushing Type Secondary Lids  
Available Ns40, Ns60, D23,  
D26(N50), D31(N70)

## DETAILS



**M16 & M18 Plugs  
Long & short types**



**Secondary Lids  
Heat Seal Type**



**Secondary Lids  
T-Akumsan Leakage Proof**

# HEAVY DUTY SERIES

## ABC Types Conventional and MF Lids



**ABC – Conventional Flat Lids**  
M27 plugs. Alternative Terminals and Handles  
Available A, B and C types

### DETAILS



DIN Handle  
W Type terminal

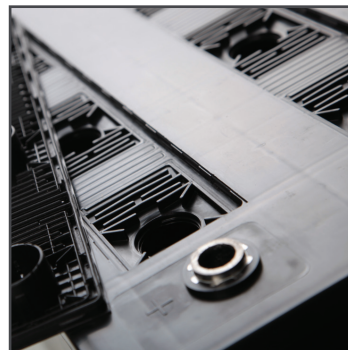


Mac Handle  
810 Type terminal

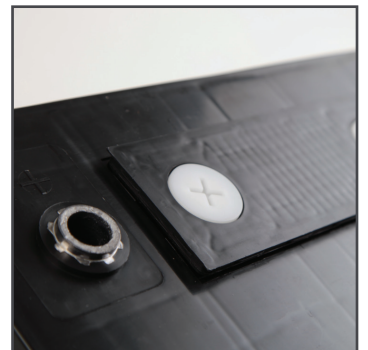


**ABC– MF Pushing Type / T-Akumsan Lids**  
Pushing Type Secondary Lids  
Available A, B and C types

### DETAILS



Secondary Lid,  
Leakage Proof / 100%  
Sealed



Secondary Lid,  
with plugs option

# HEAVY DUTY SERIES MAC Type Kamina & Non Kamina Lids



MAC - 140 Kamina Lid

M27 Kamina Plugs



MAC - 110 Kamina Lid

M27 Kamina Plugs



MAC - 110 Non Kamina Lid

Non Kamina version

# HEAVY DUTY SERIES

## Compact Type / Flat Lids



Compact - 98 / D2 and Compact - 127 / D3

Flat Lids



Compact - 98 / D2 and Compact - 127 / D3

Flat Lids M18 and M27 plug options

# HEAVY DUTY SERIES

## D7 / NATO, Flat and MF Lids



**D7 / NATO – Flat Lids**

Internal & External terminal positions



**D7 / NATO – MFT-Akumsan**

Internal & External terminal positions



**D7 / NATO – MFT-Akumsan**

Fully sealed, Leakage Proof 100%

# HEAVY DUTY SERIES

Commercial Series H3 90 Ah, H4 110 Ah, 120 Ah and 180 Ah



H3 90 Ah & H4 110 Ah

Flat Covers with M27 Plugs



120 Ah & 150 Ah

Flat Covers with M27 Plugs

# HEAVY DUTY SERIES GR31



GR 31MF  
T-Akumsan Type

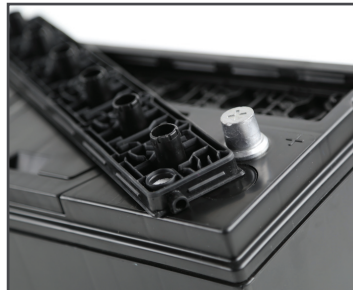


GR 31MF  
Sealing Type



GR 31MF  
Sealing Type with Plugs (M18)

## DETAILS



Post Type Terminal



Stud Type Terminal



# INDUSTRIAL SERIES VRLA Front Access Stationary



**VRLA Front Access Types**

70 Ah to 200 Ah / 6 Types available



**VRLA Front Access Types**

Flame retardant material option according to UL94 standard

## DETAILS



**Front Access Lids With VRLA plugs**  
O-ring & flame arrestor



**Front Access Lids With membranes**  
O-ring & flame arrestor

# INDUSTRIAL SERIES DIN Traction Types



**Traction Boxes**

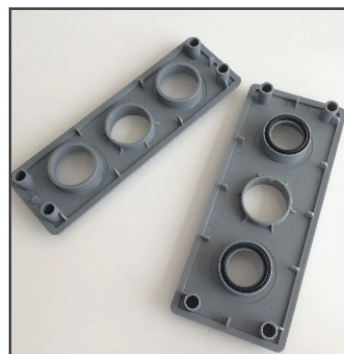
Available for DIN 2 to 10 Flexible height options



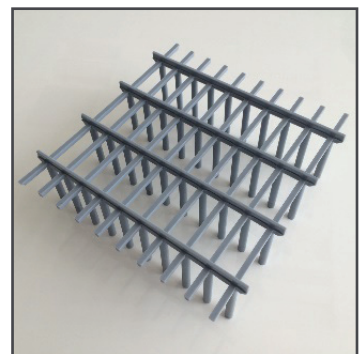
**Traction Lids**

Available for DIN 2 to 10

## DETAILS

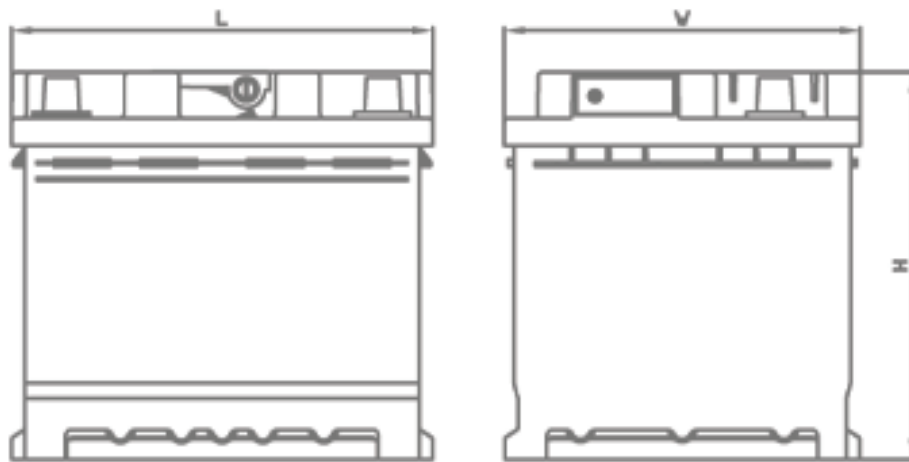


Lid options:  
2K Lids with sealing  
Standart Lids



Box options:  
External Prisms  
5 mm – 40 mm

# Battery Dimensions – Akumsan L Series



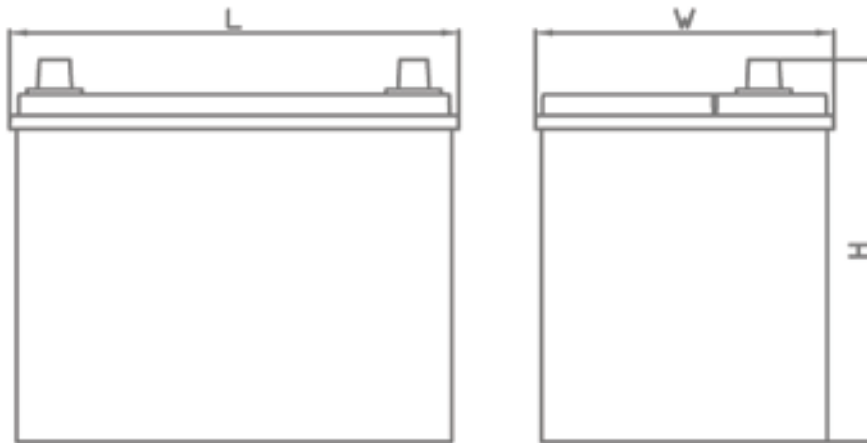
## L Series

Code DIN	BCI Gr. No	Type	Battery Dimensions (mm)		
			L	W	H
544	N/A	44L1/H4	207	175	190
555	47	55L2/H5	242	175	190
566	48	66L3/H6	277	175	190
577	94R	77L4/H7	313	175	190
588	49	88L5/H8	352	175	190

## LB Series

Code DIN	BCI Gr. No	Type	Battery Dimensions (mm)		
			L	W	H
536	99/99R	36LB/T4	207	175	174
545	42	45LB/T5	242	175	174
566	91	66LB/T6	276	175	175
577	92	77LB/T7	312,6	175	175
588	93	88LB/T8	352	175	175

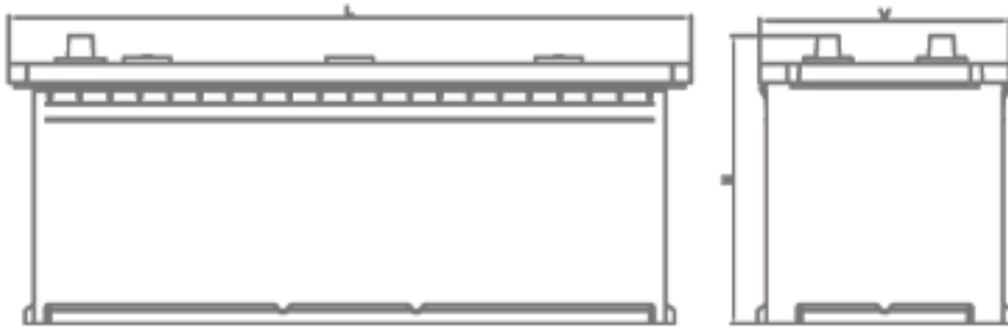
# Battery Dimensions – Akumsan JIS Series



## JIS Series

Code JIS	BCI Gr. No	Type	Battery Dimensions (mm)		
			L	W	H
35NS40	N/A	NS 40	196	128	222
45NS60	N/A	NS 60	236	128	222
55D23	25	D 23	230	172	220
65D23					
75D23					
55D26	24 / 24R	N 50 (D26)	259	172	220
65D26					
75D26					
80D26					
65D31	27 / 27R	N 70 (D31)	305	172	220
75D31		N 70 (D31) -1			
95D31					

## Battery Dimensions – Akumsan ABC Series



### ABC Series

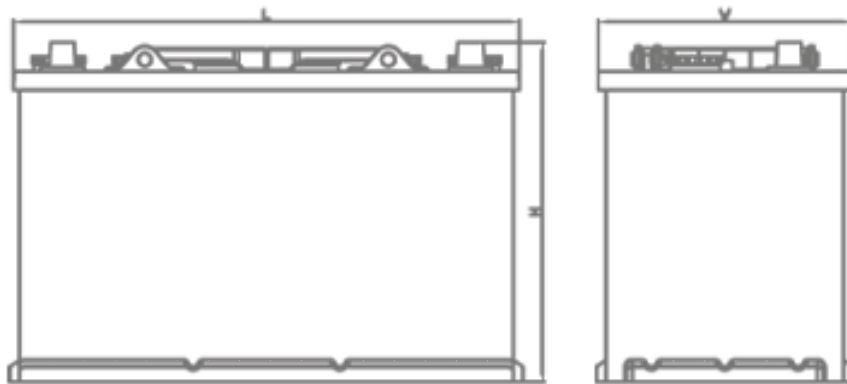
Code DIN	BCI Gr. No	Type	Battery Dimensions (mm)		
			L	W	H
640	-	A	512	188	209
670	-	B	512	222	208
710	-	C	515	273	226

# Battery Dimensions – Akumsan MAC & COMPACT Series



## MAC Series

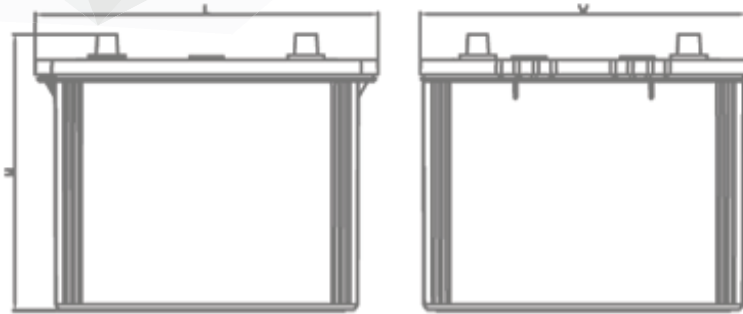
Code DIN	BCI Gr. No	Type	Battery Dimensions (mm)		
			L	W	H
610	-	110 MAC	514	175	210
643	-	143 MAC	514	218	210



## Compact Series

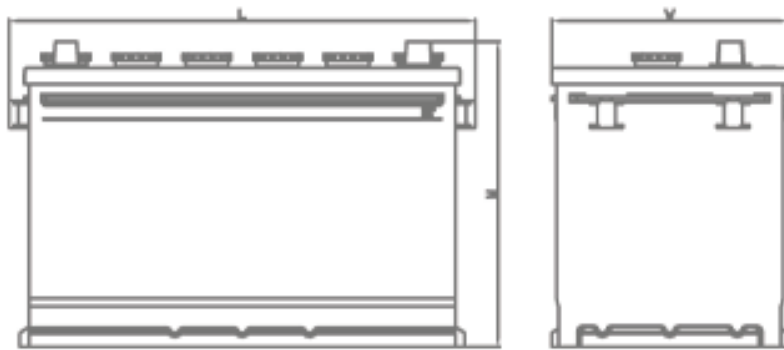
Code DIN	BCI Gr. No	Type	Battery Dimensions (mm)		
			L	W	H
-	-	98 COMPACT	345	173	231
-	-	127 COMPACT	345	172	282

# Battery Dimensions – Akumsan NATO & Commercial Series



## NATO

Code DIN	BCI Gr. No	Type	Battery Dimensions (mm)		
			L	W	H
-	-	D7 & 6 TN	282	269	226,8



## Commerical Series

Code DIN	BCI Gr. No	Type	Battery Dimensions (mm)		
			L	W	H
600	-	90 Ah (H3)	324	175	222
-	-	110 Ah (H4)	346	175	226
-	-	120 Ah	510	176	218
-	-	180 Ah	510	214	221

# Battery Dimensions – Industrial / Stationary VRLA Front Access

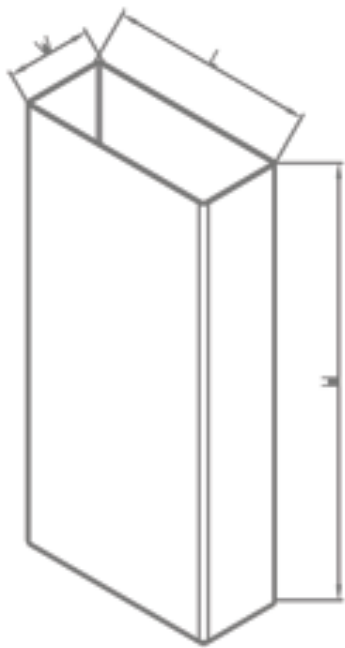


## VRLA Stationary

Code DIN	BCI Gr. No	Type	Battery Dimensions (mm)		
			L	W	H
-	-	12 VRLA 70-82 Ah	395	105	255
-	-	12 VRLA 90 Ah	395	105	286
-	-	12 VRLA 100 Ah	555	125	231
-	-	12 VRLA 150 (130-200 Ah)	555	125	320
-	-	12 VRLA 150B (130-200 Ah)	555	125	280



# Battery Dimensions – Industrial / Traction



## Traction

DIN Type	Battery Dimensions (mm)		
	L	W	H
2 PzS	198	47	Any Height is available
3 PzS	198	65	
4 PzS	198	83	
5 PzS	198	101	
6 PzS	198	119	
7 PzS	198	137	
8 PzS	198	155	
9 PzS	198	174	
10 PzS	198	192	



**AKÜMSAN®**

Osmangazi Mh. Gazi (Atatürk) Cd. No:19  
Kıraç 34522 Esenyurt, İstanbul, Turkey

T: +90 (212) 622 44 44  
F: +90 (212) 689 70 40 - 41

[www.akumsan.com](http://www.akumsan.com)

