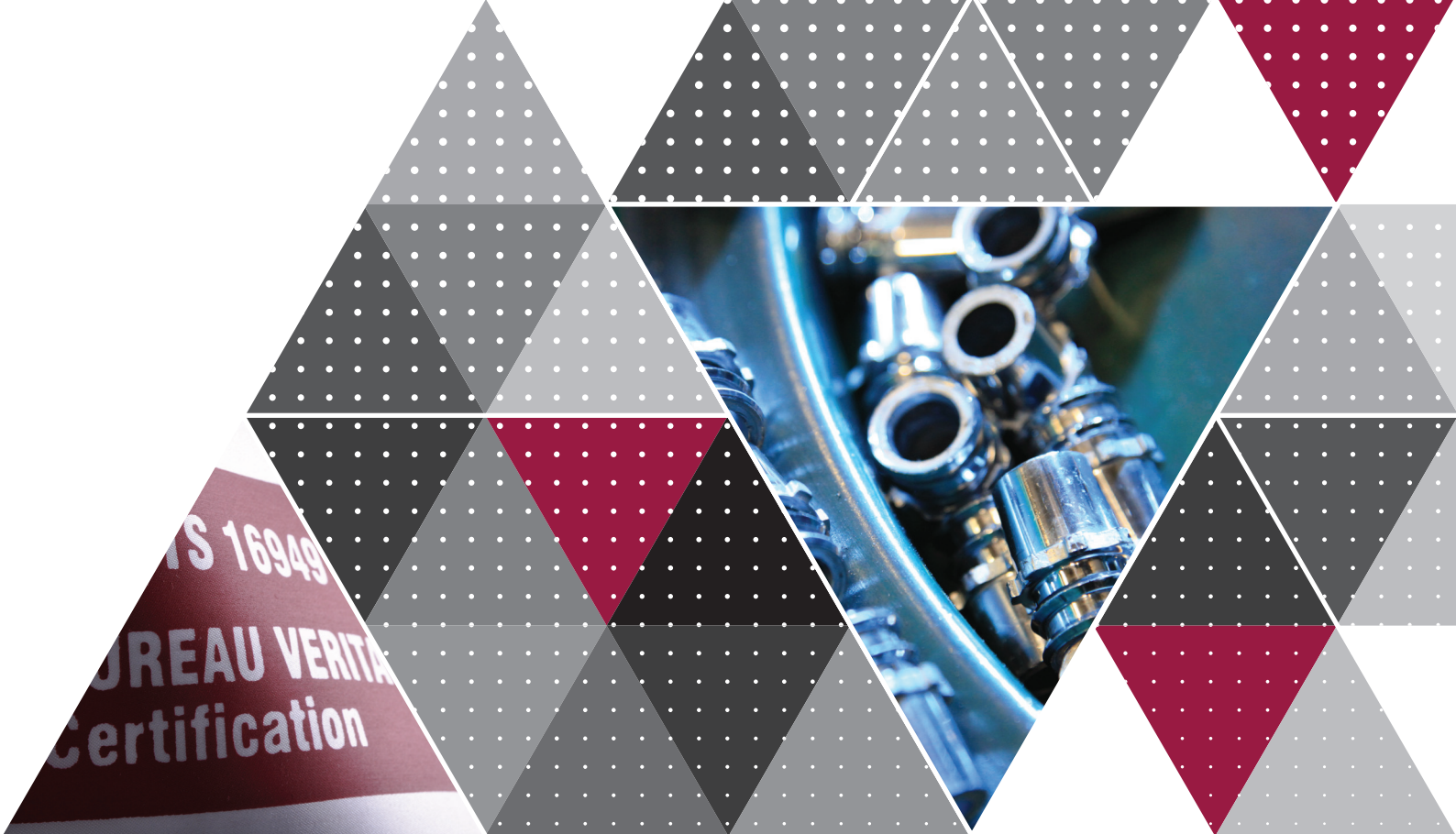
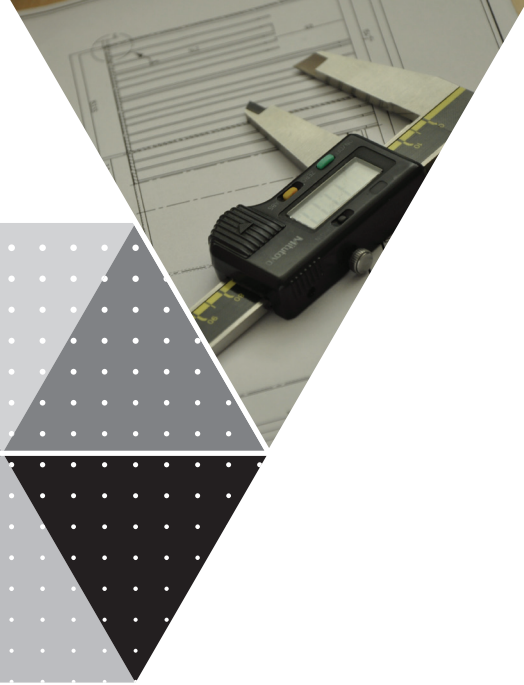




PRODUCT CATALOGUE

www.akumsan.com





ABOUT US

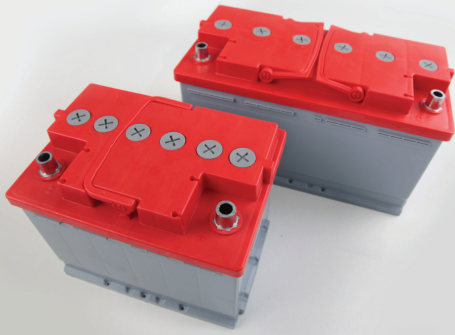
Akümsan was incorporated in Istanbul in 1979 in order to manufacture plastic boxes and lids for automotive and industrial battery manufacturers in Turkey and worldwide.

Akümsan is one of the key players serving with its high capacity and hundreds of product range in its main scope of activity and aiming to meet market requirements with more efficient and environment friendly products through its wide R&D team, enabling its customers to differentiate themselves with its special design products and having high brand recognition in its sector.



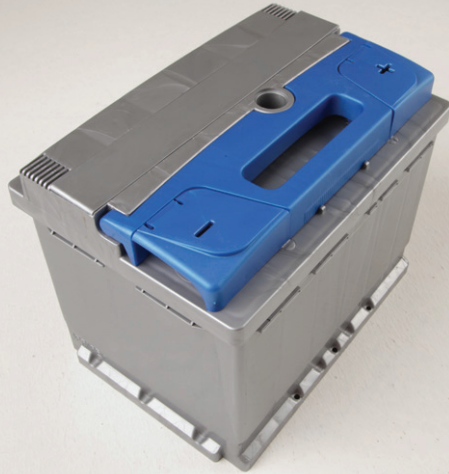
L SERIES CONVENTIONAL LIDS

Kamina & T7 Types



Conventional Kamina Series

With / Without Filter Available
L1,L2,L3,L5, Available as Non Kamina.



T7 Kamina Series

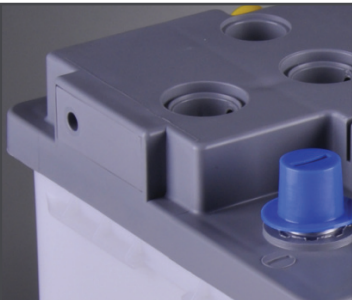
Strip on plugs - With / Without Locking
Available L1,L2,L3,L5



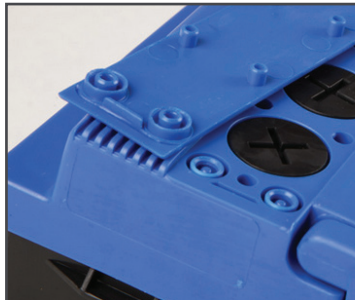
T7 Prestige Kamina Series

Strip on plugs - With / Without Locking
Available L1,L2,L3,L5

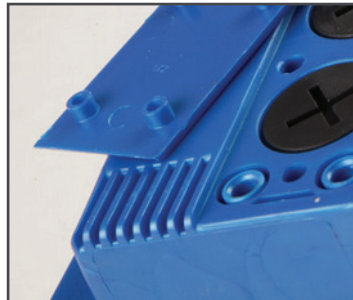
DETAILS



With / Without
Filter



Plug Strip - Locking



Plug Strip - WO
Locking



Prestige Terminal
Covers

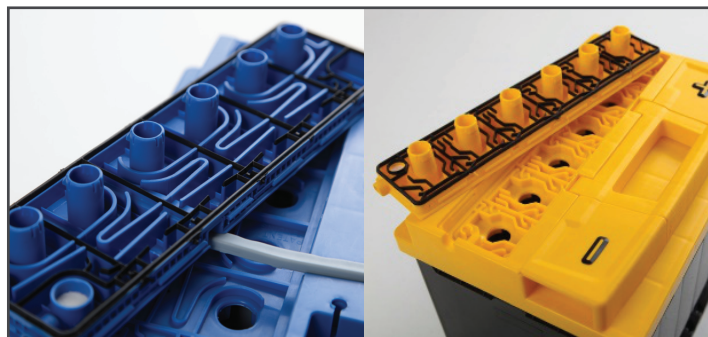
L SERIES MF PUSHING TYPE LIDS - PREMIUM MF / T-AKUMSAN TYPES



T-AKUMSAN MF Series

Pushing type double Lid with conventional appearance
Available L1,L2,L3,L4,L5

DETAILS



Pushing Type Secondary Lids
Leakage Proof / 100% Sealed



Special Design - T15

Front Handle
Available L1,L2,L3,L4,L5



Special Design - T16

Front Handle
Available L1,L2,L3,L4,L5



Special Design - T17

Front Handle
Available L1,L2,L3,L4,L5



Special Design - T18

Front Handle
Available L1,L2,L3,L4,L5



Special Design - T19

Front Handle
Available L1,L2,L3,L4,L5



Special Design - T20

Front Handle
Coming Soon

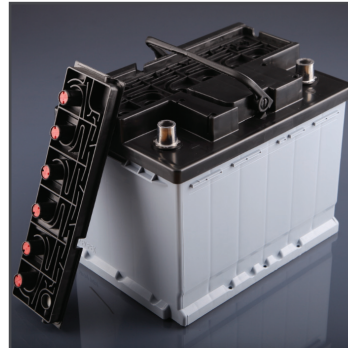
L SERIES MF HEAT SEAL TYPE LIDS

T12 Series & Hyundai Special



T12 MF Series – Heat Seal Type
Double Lid with conventional appearance
Available L1,L2,L3,L5

DETAILS



Secondary Lid with
condensation plugs (T12)



Secondary Lid with
labyrinth structure (T12)



Hyundai MF Cover – Heat Seal Type
Special Project for Hyundai Aftermarket
Available only – L2

DETAILS



Secondary Lid with acid-return structure

L SERIES MF LIDS T9 / T10 / T11 Types



T9 MF Series

Double Lid with front handle and
slide terminal covers
Available L1,L2,L3,L5



T10 MF Series

Double Lid with conventional
appearance
Available L1,L2,L3,L5



T11 MF Series

Double Lid with front handle and
fold terminal covers
Available L1,L2,L3,L5

DETAILS



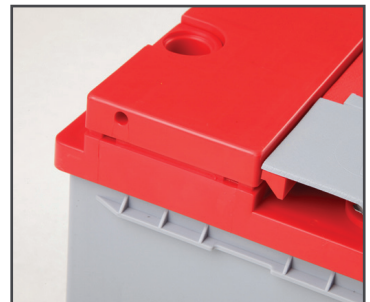
Sliding terminal covers
(T9)



Inner Plugs with / without
membrane (T9-T10-T11)



Folding terminal covers
(T11)



Pushing type or Heat
Seal Type Lids (T9-T10-T11)

JIS SERIES

Conventional and MF Types



JIS – Conventional Flat Lids

M16 & M18 Plug options
Available Ns40, Ns60, D23,
D26(N50), D31(N70)



JIS – MF Heat Seal Type Lids

Double lid with labyrinth structure
Available Ns40, Ns60, D23,
D26(N50), D31(N70)



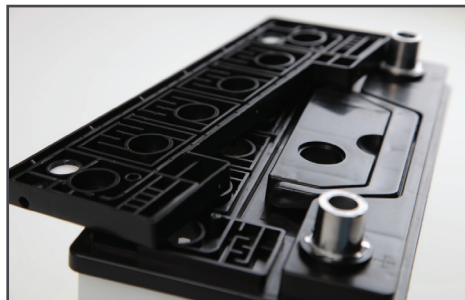
JIS – MF Pushing Type / T-Akumsan Lids

Pushing Type Secondary Lids
Available Ns40, Ns60, D23,
D26(N50), D31(N70)

DETAILS



M16 & M18 Plugs
Long & short types



Secondary Lids
Heat Seal Type



Secondary Lids
T-Akumsan Leakage Proof

HEAVY DUTY SERIES

ABC Types Conventional and MF Lids



ABC – Conventional Flat Lids
M27 plugs. Alternative Terminals and Handles
Available A, B and C types

DETAILS



DIN Handle
W Type terminal

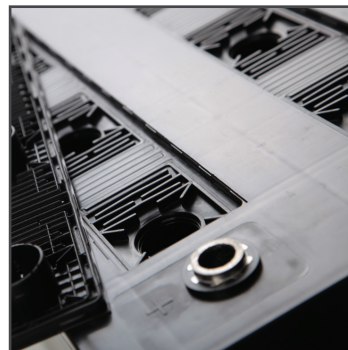


Mac Handle
810 Type terminal

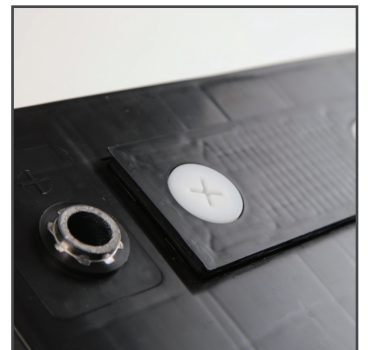


ABC– MF Pushing Type / T-Akumsan Lids
Pushing Type Secondary Lids
Available A, B and C types

DETAILS



Secondary Lid,
Leakage Proof / 100%
Sealed



Secondary Lid,
with plugs option

HEAVY DUTY SERIES

MAC Type Kamina & Non Kamina Lids



MAC - 140 Kamina Lid

M27 Kamina Plugs



MAC - 110 Kamina Lid

M27 Kamina Plugs



MAC - 110 Non Kamina Lid

Non Kamina version

HEAVY DUTY SERIES

Compact Type / Flat Lids



Compact - 98 / D2 and Compact - 127 / D3

Flat Lids



Compact - 98 / D2 and Compact - 127 / D3

Flat Lids M18 and M27 plug options

HEAVY DUTY SERIES

D7 / NATO, Flat and MF Lids



D7 / NATO – Flat Lids

Internal & External terminal positions



D7 / NATO – MFT-Akumsan

Internal & External terminal positions



D7 / NATO – MFT-Akumsan

Fully sealed, Leakage Proof 100%

HEAVY DUTY SERIES

Commercial Series H3 90 Ah, H4 110 Ah, 120 Ah and 180 Ah



H3 90 Ah & H4 110 Ah

Flat Covers with M27 Plugs



120 Ah & 150 Ah

Flat Covers with M27 Plugs

HEAVY DUTY SERIES GR31



GR 31MF
T-Akumsan Type

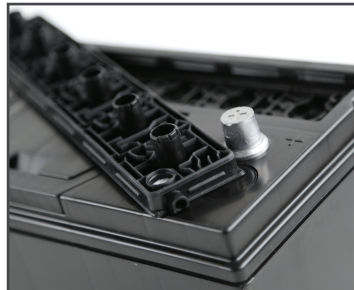


GR 31MF
Sealing Type



GR 31MF
Sealing Type with Plugs (M18)

DETAILS

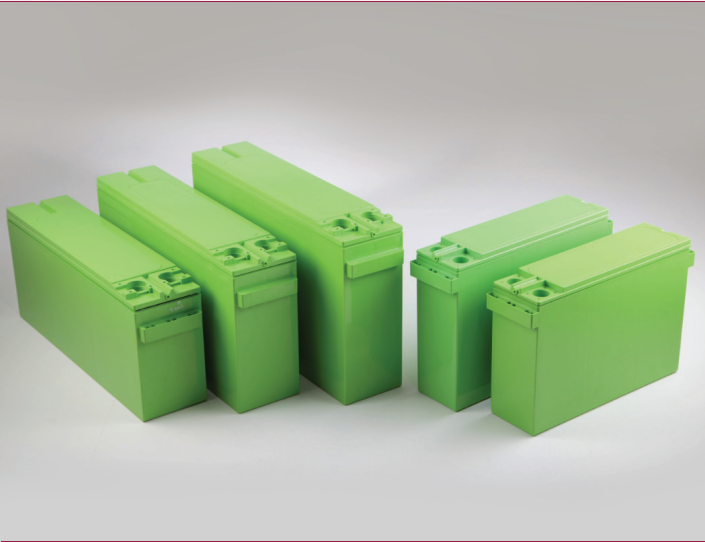


Post Type Terminal



Stud Type Terminal

INDUSTRIAL SERIES VRLA Front Access Stationary



VRLA Front Access Types

70 Ah to 200 Ah / 6 Types available



VRLA Front Access Types

Flame retardant material option according to UL94 standard

DETAILS



Front Access Lids With VRLA plugs
O-ring & flame arrestor



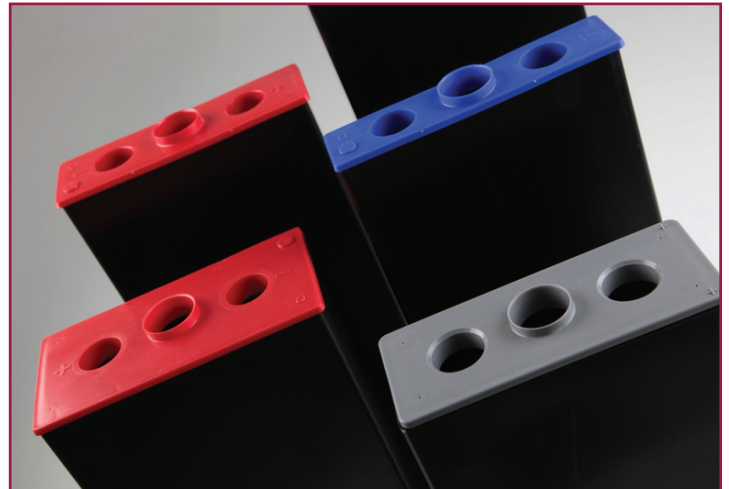
Front Access Lids With membranes
O-ring & flame arrestor

INDUSTRIAL SERIES DIN Traction Types



Traction Boxes

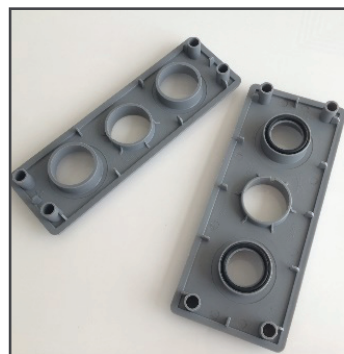
Available for DIN 2 to 10 Flexible height options



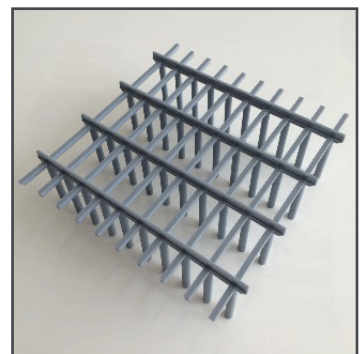
Traction Lids

Available for DIN 2 to 10

DETAILS

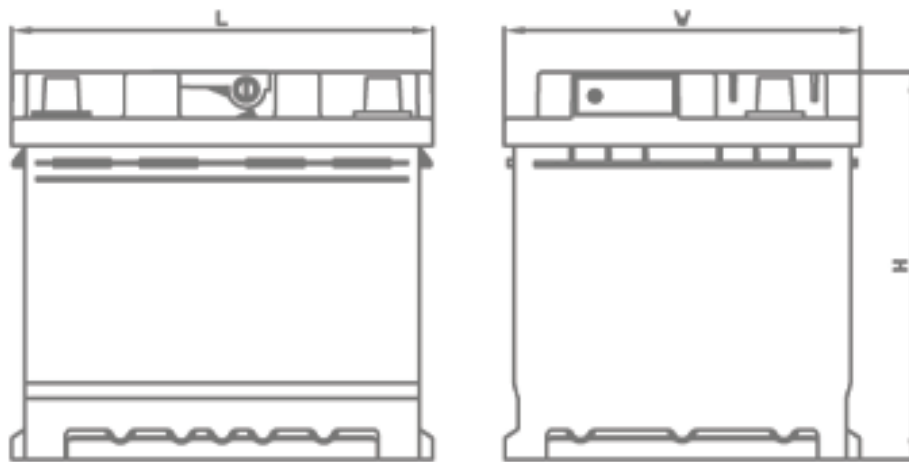


Lid options:
2K Lids with sealing
Standart Lids



Box options:
External Prisms
5 mm – 40 mm

Battery Dimensions – Akumsan L Series



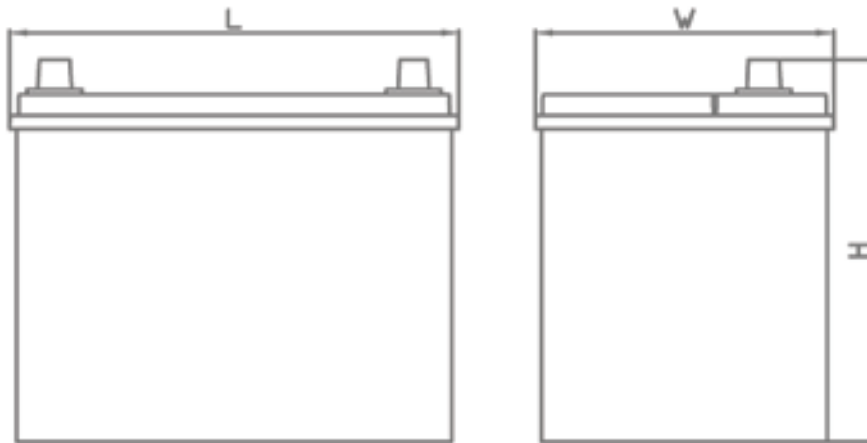
L Series

Code DIN	BCI Gr. No	Type	Battery Dimensions (mm)		
			L	W	H
544	N/A	44L1/H4	207	175	190
555	47	55L2/H5	242	175	190
566	48	66L3/H6	277	175	190
577	94R	77L4/H7	313	175	190
588	49	88L5/H8	352	175	190

LB Series

Code DIN	BCI Gr. No	Type	Battery Dimensions (mm)		
			L	W	H
536	99/99R	36LB/T4	207	175	174
545	42	45LB/T5	242	175	174
566	91	66LB/T6	276	175	175
577	92	77LB/T7	312,6	175	175
588	93	88LB/T8	352	175	175

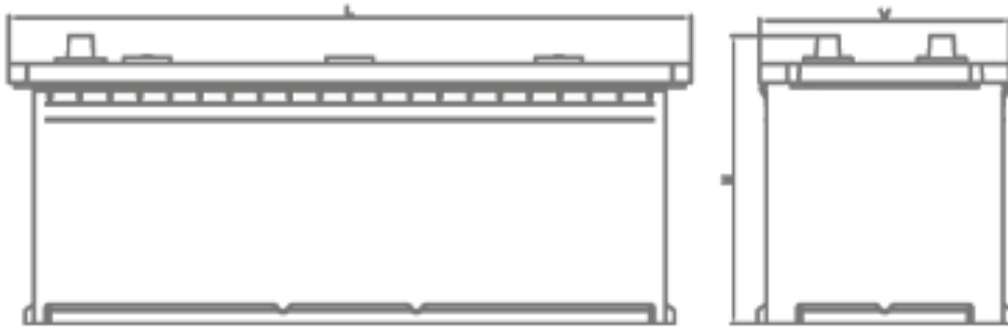
Battery Dimensions – Akumsan JIS Series



JIS Series

Code JIS	BCI Gr. No	Type	Battery Dimensions (mm)		
			L	W	H
35NS40	N/A	NS 40	196	128	222
45NS60	N/A	NS 60	236	128	222
55D23	25	D 23	230	172	220
65D23					
75D23					
55D26	24 / 24R	N 50 (D26)	259	172	220
65D26					
75D26					
80D26					
65D31	27 / 27R	N 70 (D31)	305	172	220
75D31		N 70 (D31) -1			
95D31					

Battery Dimensions – Akumsan ABC Series



ABC Series

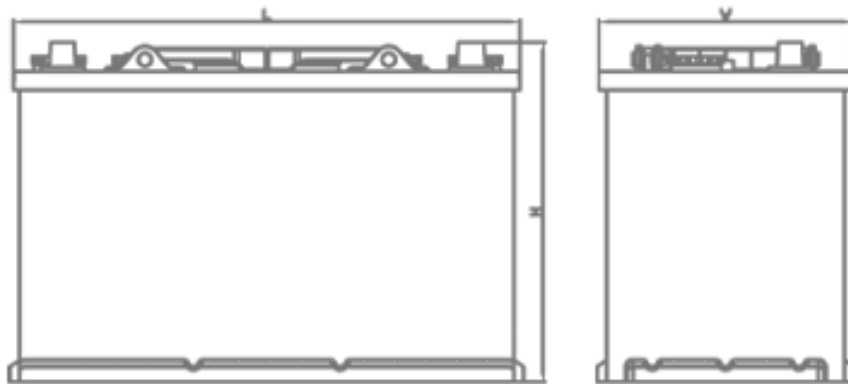
Code DIN	BCI Gr. No	Type	Battery Dimensions (mm)		
			L	W	H
640	-	A	512	188	209
670	-	B	512	222	208
710	-	C	515	273	226

Battery Dimensions – Akumsan MAC & COMPACT Series



MAC Series

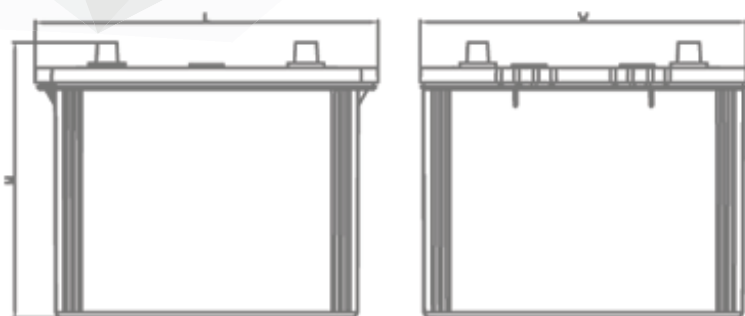
Code DIN	BCI Gr. No	Type	Battery Dimensions (mm)		
			L	W	H
610	-	110 MAC	514	175	210
643	-	143 MAC	514	218	210



Compact Series

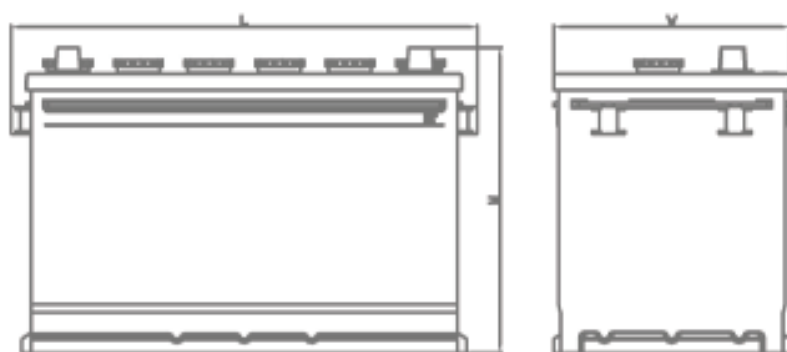
Code DIN	BCI Gr. No	Type	Battery Dimensions (mm)		
			L	W	H
-	-	98 COMPACT	345	173	231
-	-	127 COMPACT	345	172	282

Battery Dimensions – Akumsan NATO & Commercial Series



NATO

Code DIN	BCI Gr. No	Type	Battery Dimensions (mm)		
			L	W	H
-	-	D7 & 6 TN	282	269	226,8



Commerical Series

Code DIN	BCI Gr. No	Type	Battery Dimensions (mm)		
			L	W	H
600	-	90 Ah (H3)	324	175	222
-	-	110 Ah (H4)	346	175	226
-	-	120 Ah	510	176	218
-	-	180 Ah	510	214	221

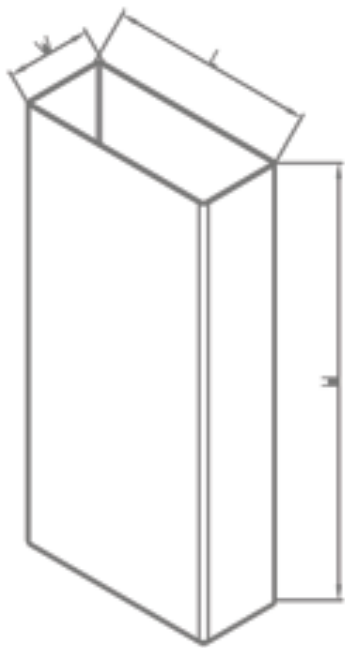
Battery Dimensions – Industrial / Stationary VRLA Front Access



VRLA Stationary

Code DIN	BCI Gr. No	Type	Battery Dimensions (mm)		
			L	W	H
-	-	12 VRLA 70-82 Ah	395	105	255
-	-	12 VRLA 90 Ah	395	105	286
-	-	12 VRLA 100 Ah	555	125	231
-	-	12 VRLA 150 (130-200 Ah)	555	125	320
-	-	12 VRLA 150B (130-200 Ah)	555	125	280

Battery Dimensions – Industrial / Traction



Traction

DIN Type	Battery Dimensions (mm)		
	L	W	H
2 PzS	198	47	Any Height is available
3 PzS	198	65	
4 PzS	198	83	
5 PzS	198	101	
6 PzS	198	119	
7 PzS	198	137	
8 PzS	198	155	
9 PzS	198	174	
10 PzS	198	192	



AKÜMSAN®

Osmangazi Mh. Gazi (Atatürk) Cd. No:19
Kıraç 34522 Esenyurt, İstanbul, Turkey

T: +90 (212) 622 44 44
F: +90 (212) 689 70 40 - 41

www.akumsan.com

